



## SAMPSON COUNTY 911 & ES FACILITIES

CLINTON,  
NORTH CAROLINA

CONSTRUCTION  
DOCUMENTS

### ARCHITECTURAL SITE DETAILS

DATE 12.04.2020  
PROJECT NO 20003  
REVISIONS  
NUM. DATE DESCRIPTION:

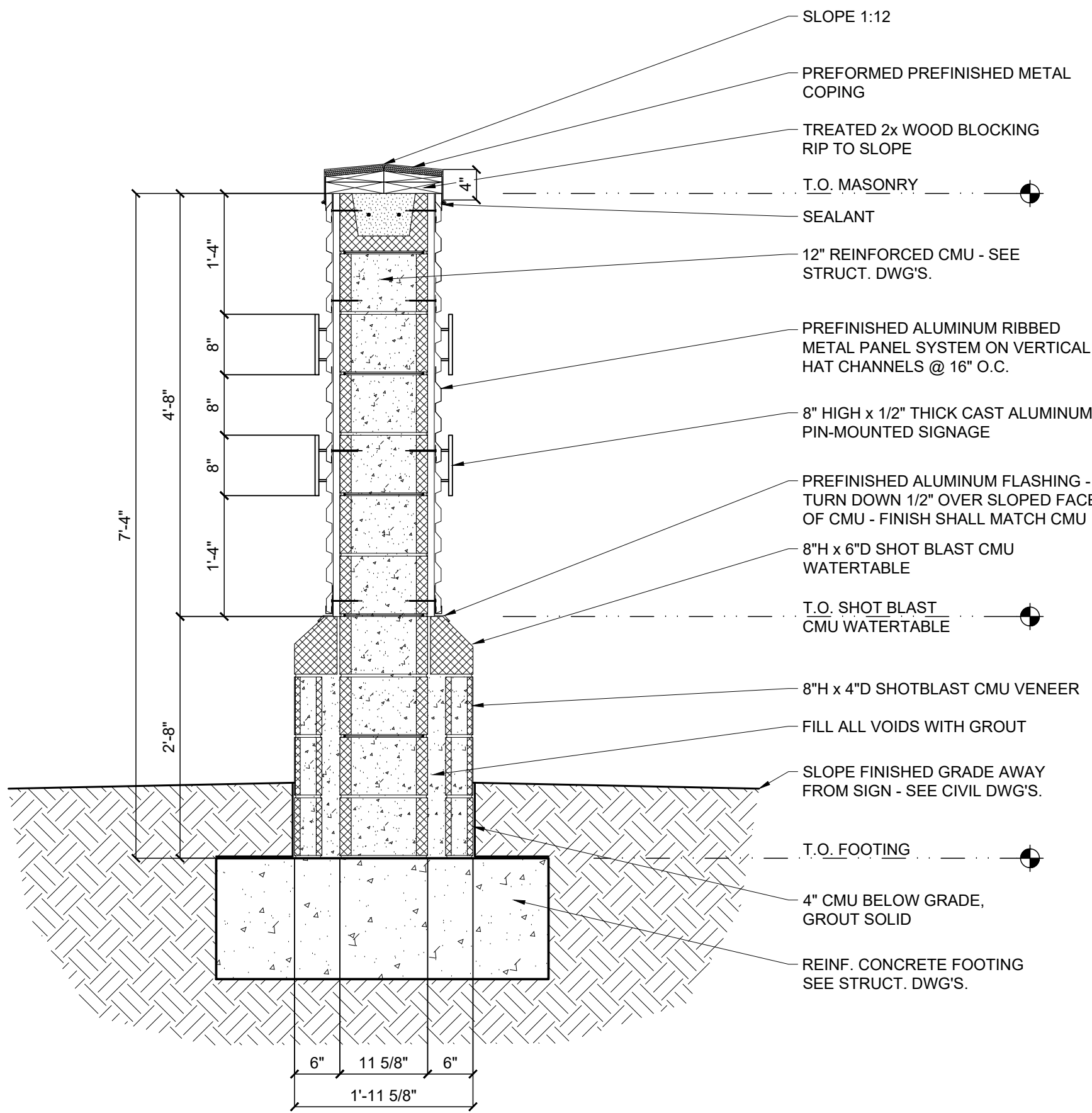
THIS DRAWING IS THE PROPERTY OF ADW ARCHITECTS, P.A. AND  
SHALL NOT BE REPRODUCED OR COPIED IN WHOLE OR IN PART. IT  
SHALL NOT BE USED ON ANY OTHER PROJECT OR GIVEN TO ANY  
OTHER COMPANY OR AGENCY WITHOUT THE CONSENT OF ADW  
ARCHITECTS, P.A.



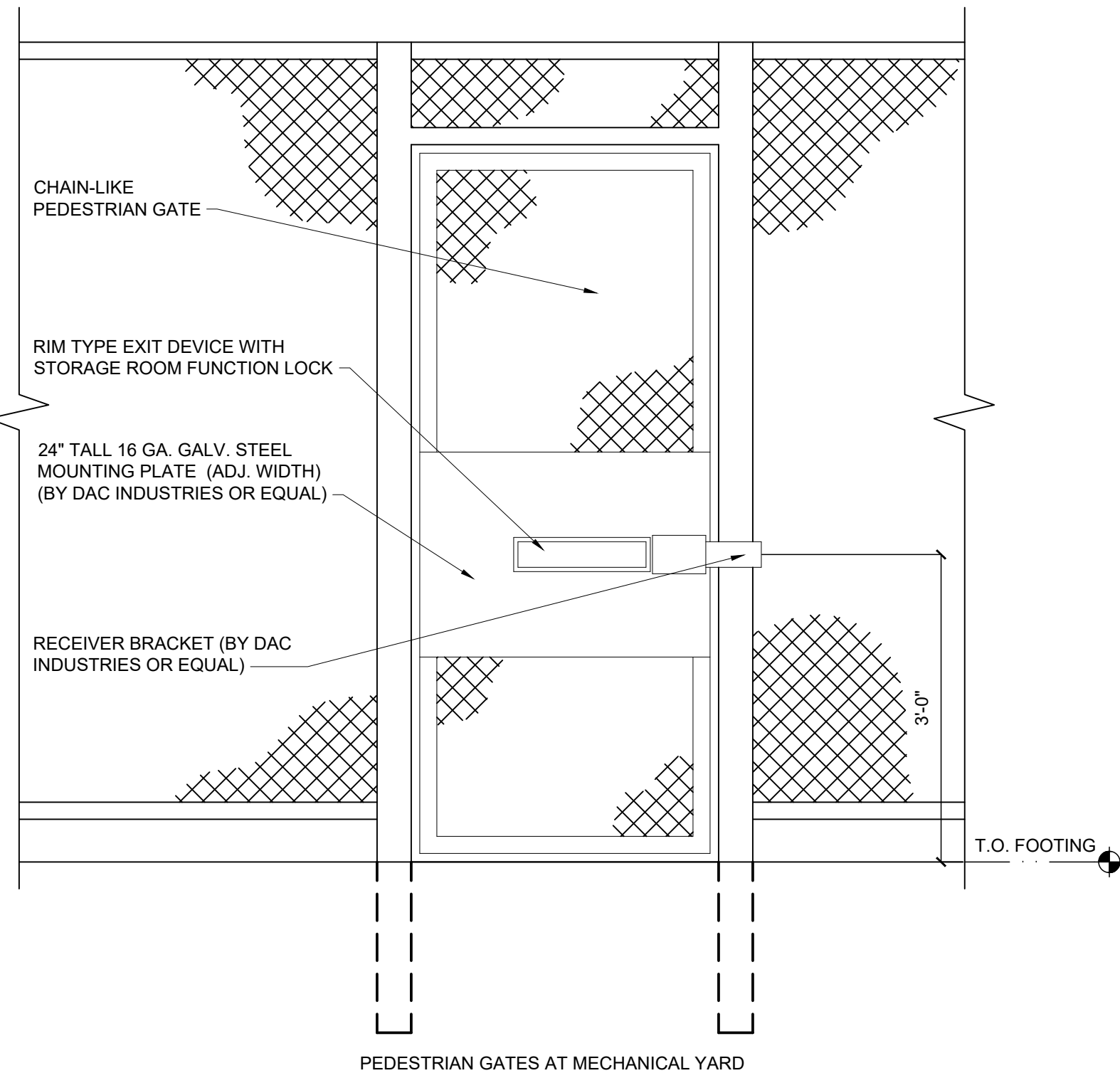
SEAL

SHEET NUMBER

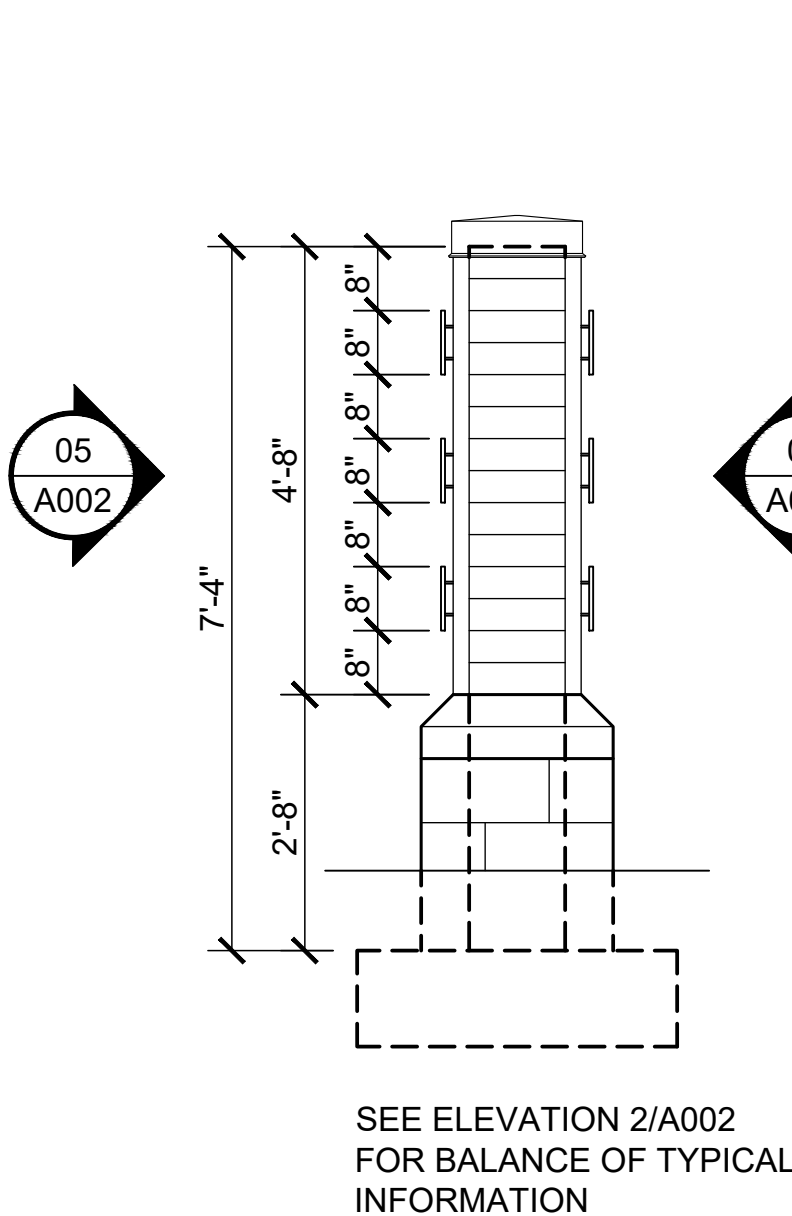
A002



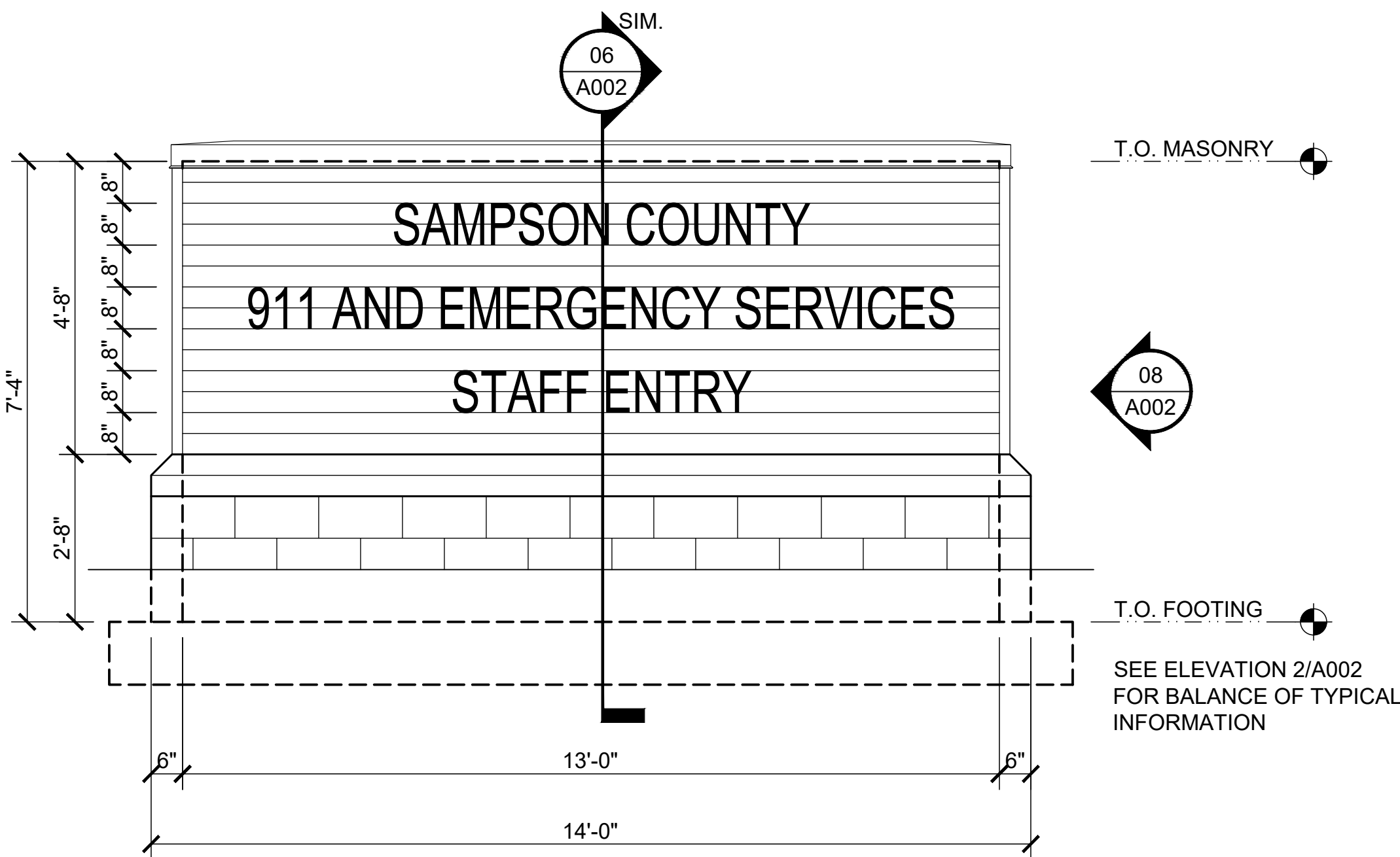
SIGN SECTION SCALE: 3/4" = 1'-0" 06



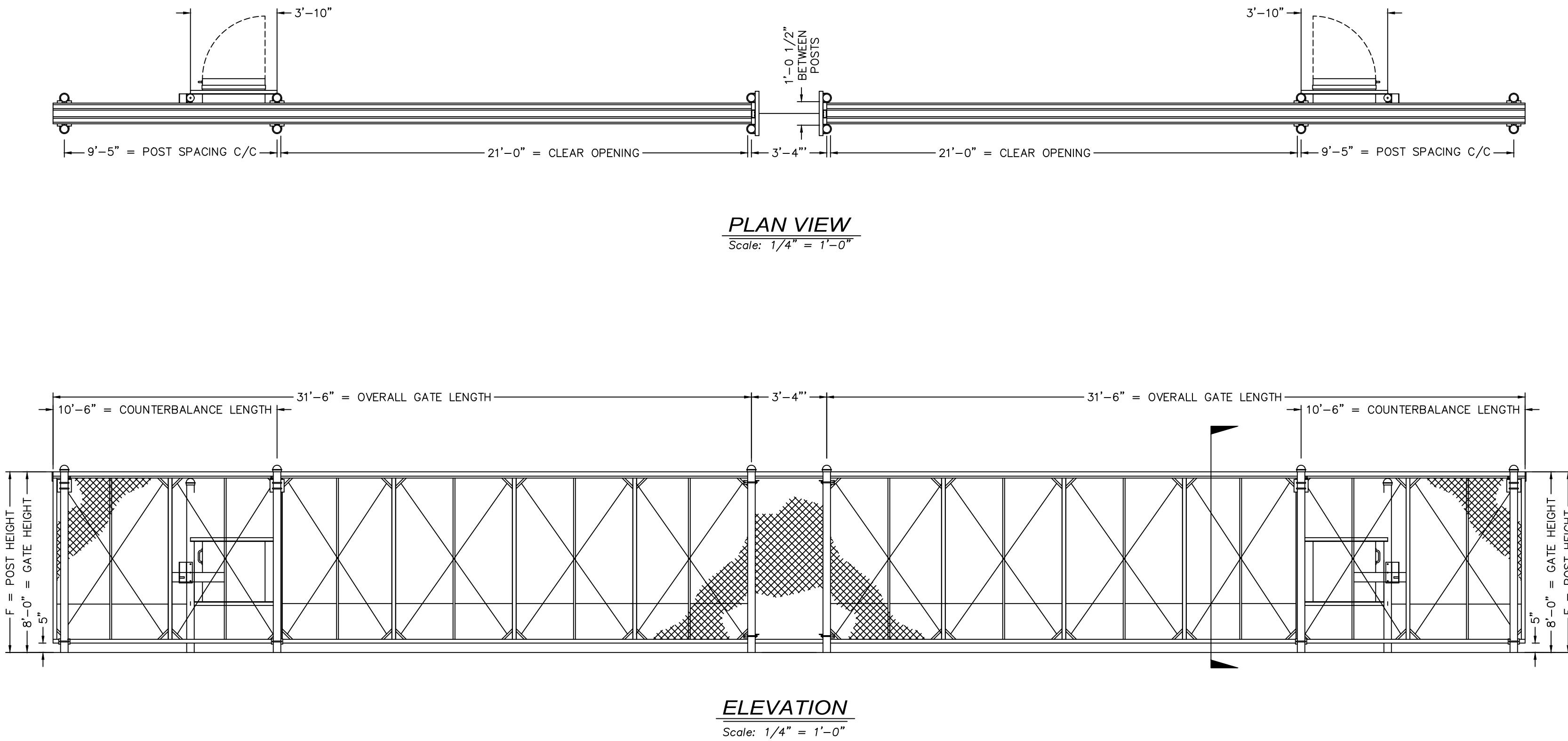
GATE ELEVATION SCALE: 3/4" = 1'-0" 02



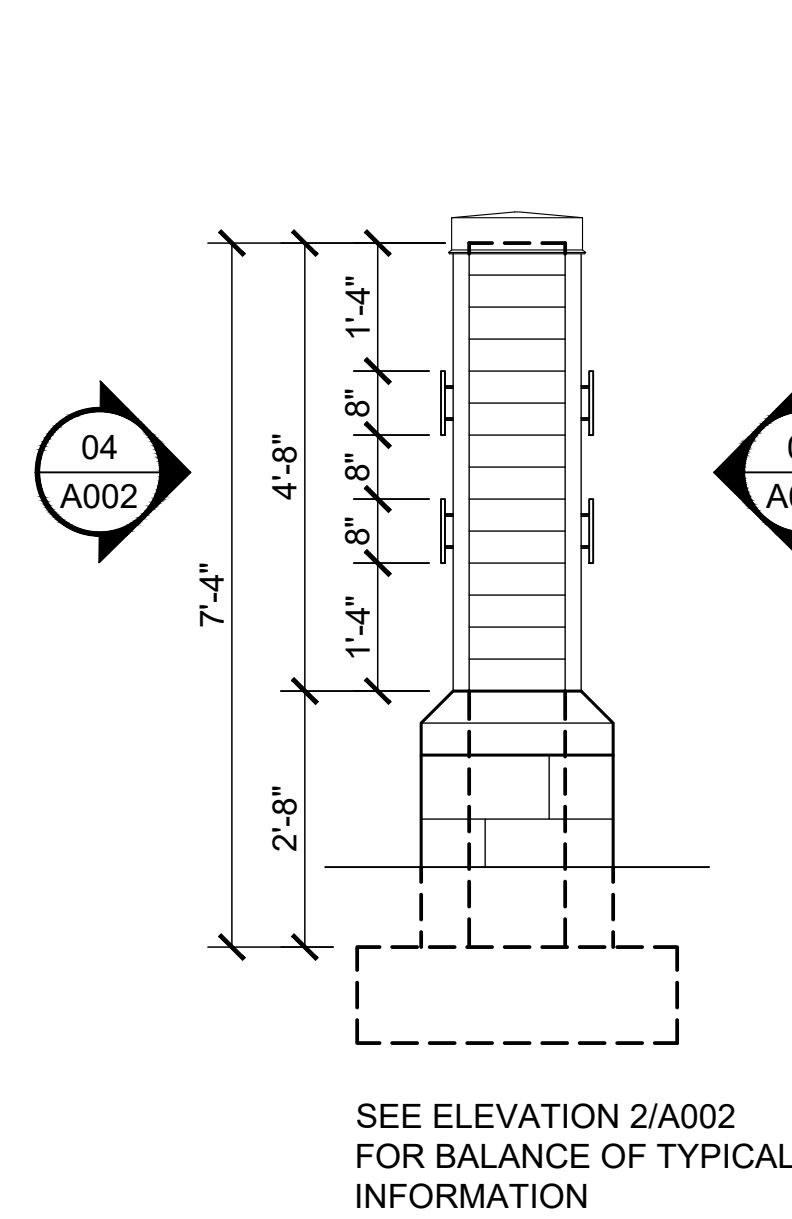
SIGN ELEVATION SCALE: 1/2" = 1'-0" 08



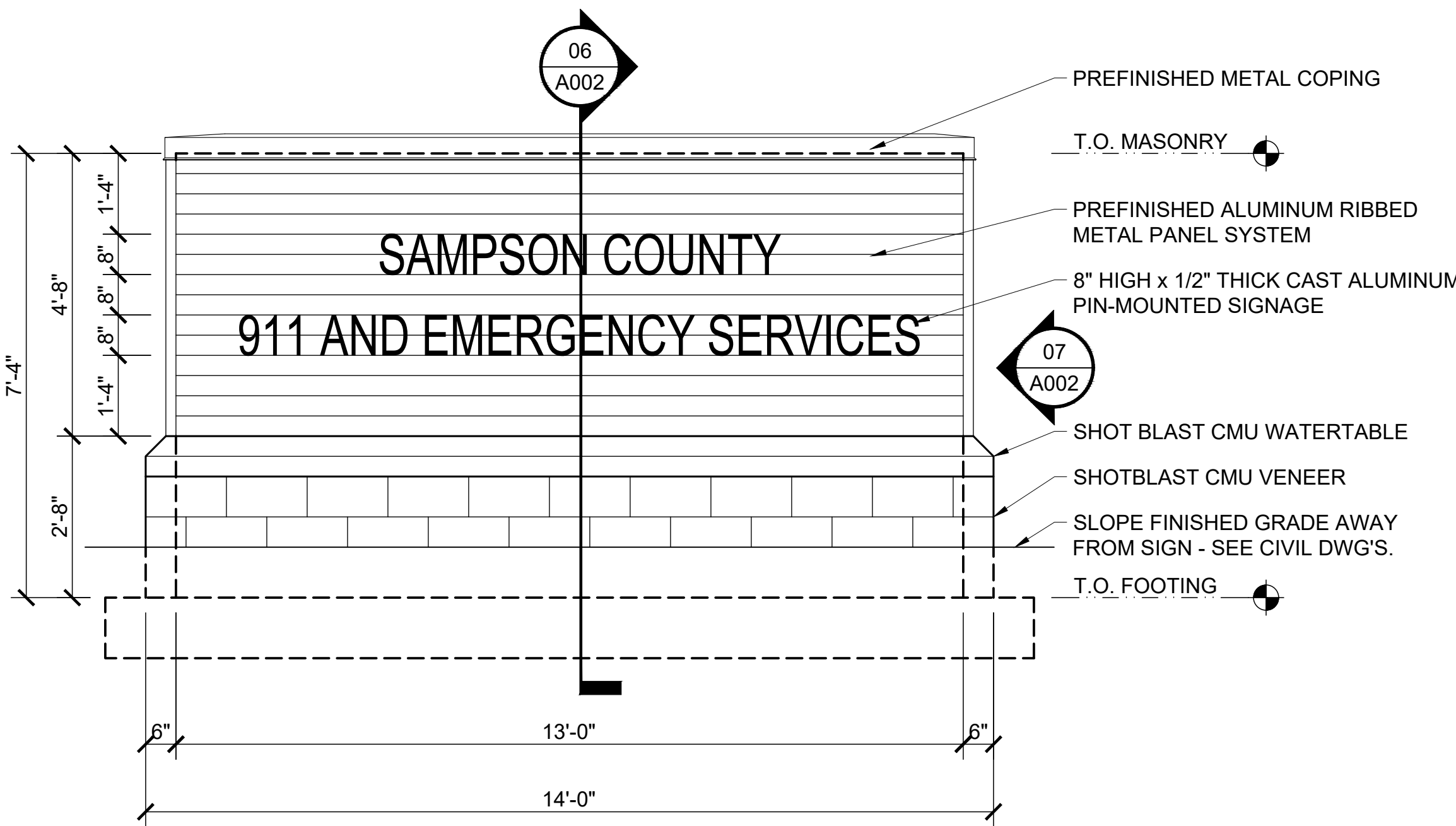
SIGN ELEVATION SCALE: 1/2" = 1'-0" 05



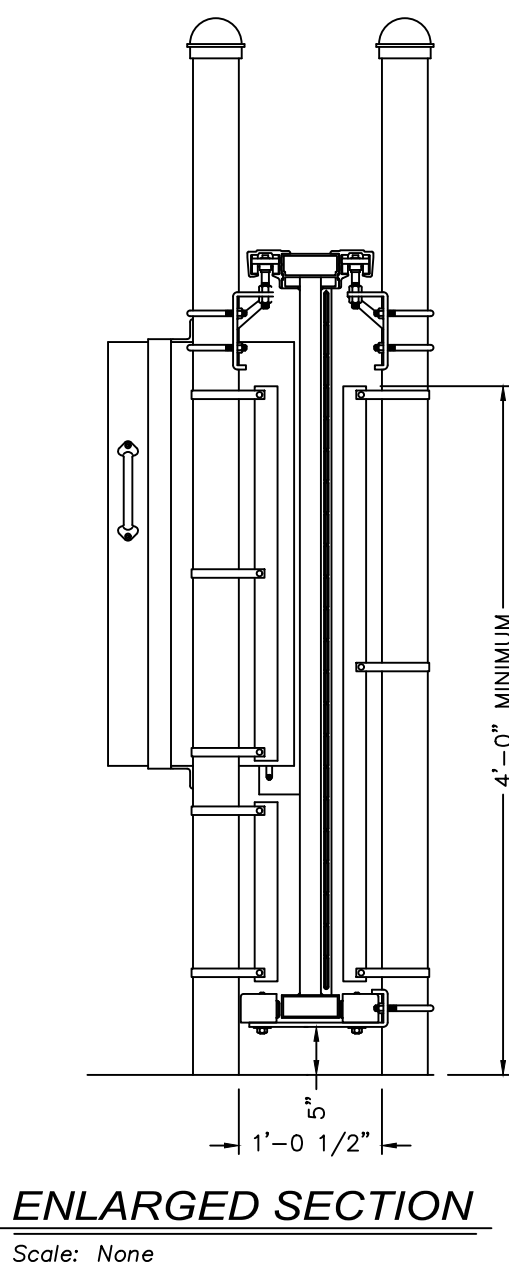
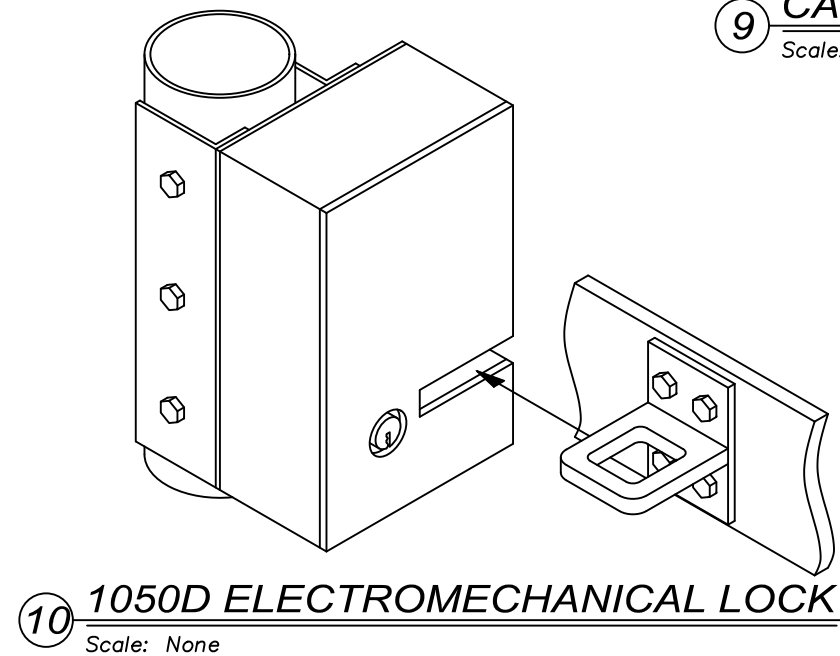
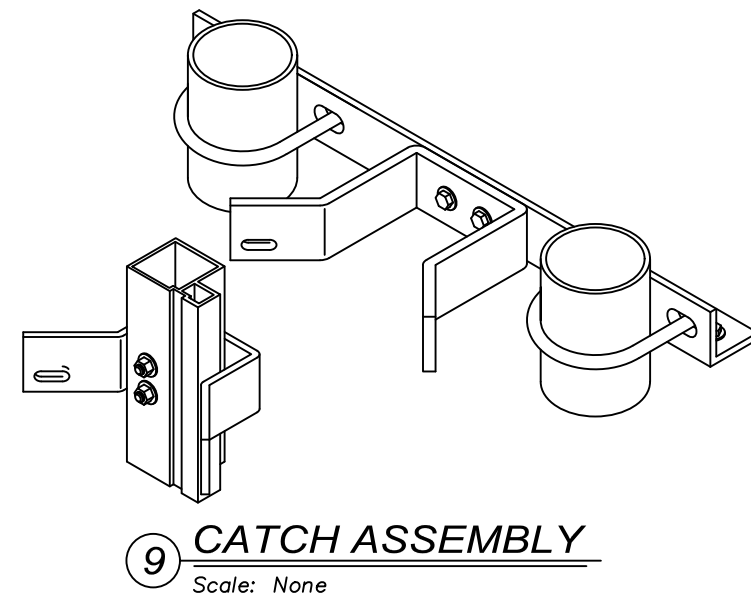
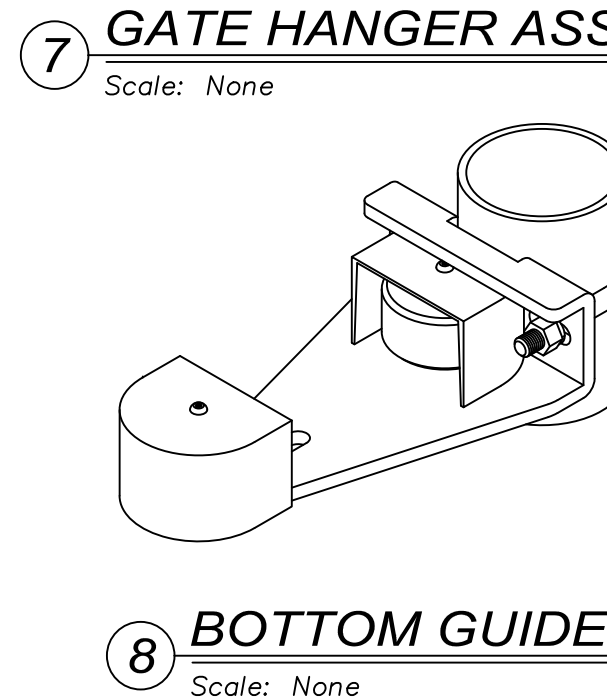
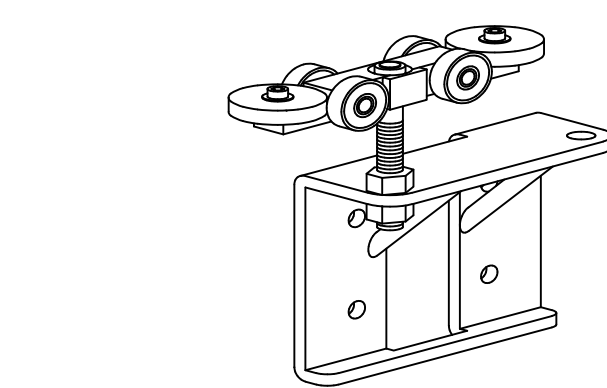
ELEVATION  
Scale: 1/4" = 1'-0"



SIGN ELEVATION SCALE: 1/2" = 1'-0" 07



SIGN ELEVATION SCALE: 1/2" = 1'-0" 04



SECURITY GATE DETAILS SCALE: VARIES 01